

Pittsburgh Public Schools

**2006-2007 District Level
PSSA Results**

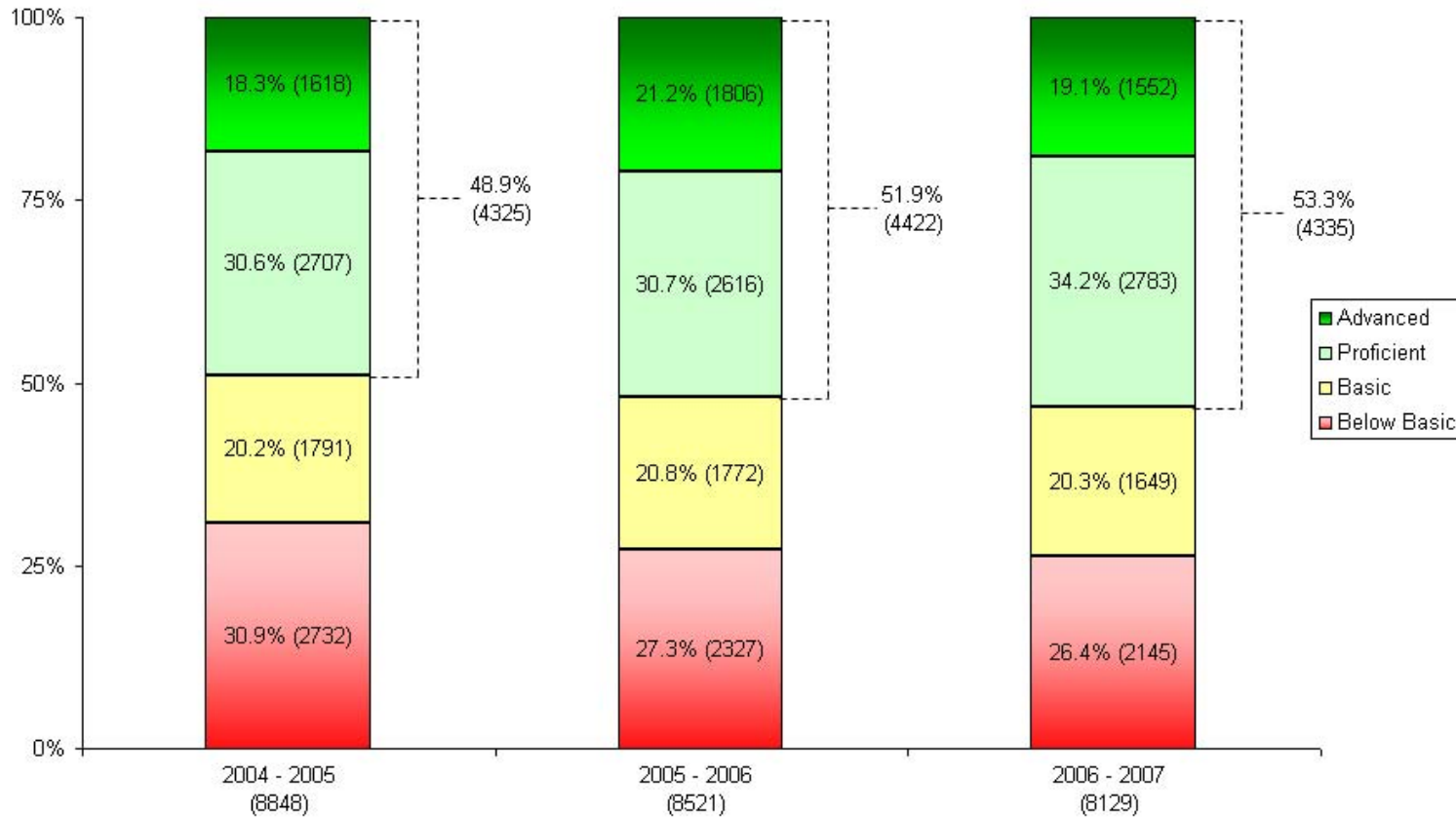
Mark Roosevelt, Superintendent

August 16, 2007



EXCELLENCE
FOR ALL

Pittsburgh Public Schools 3 Year District Trend in PSSA Performance Combined Grades 3,5,8 and 11 Reading



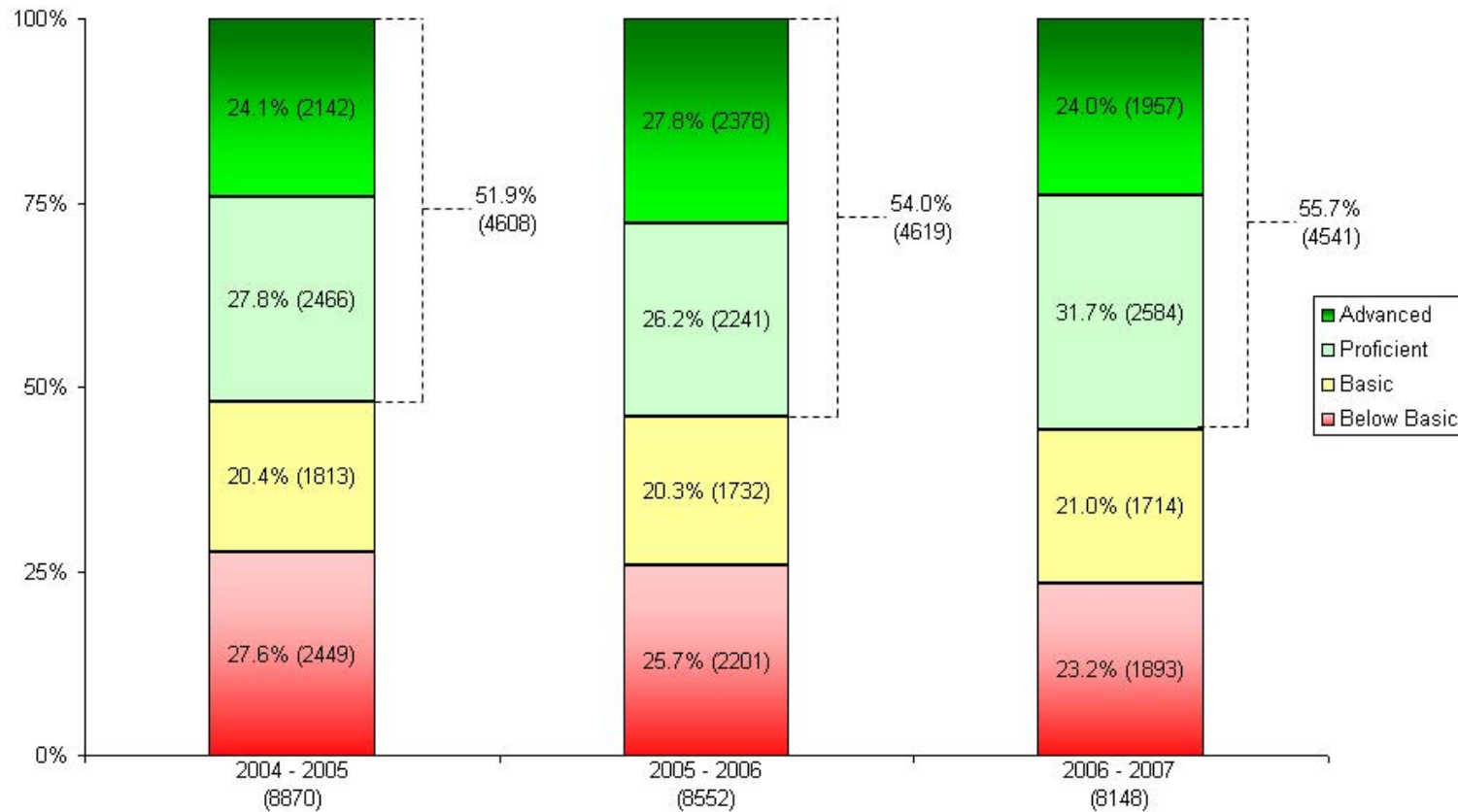
Note: Numbers in parentheses represent the number of students.

August 16, 2007



EXCELLENCE
FOR ALL

Pittsburgh Public Schools 3 Year District Trend in PSSA Performance Combined Grades 3,5,8 and 11 Math

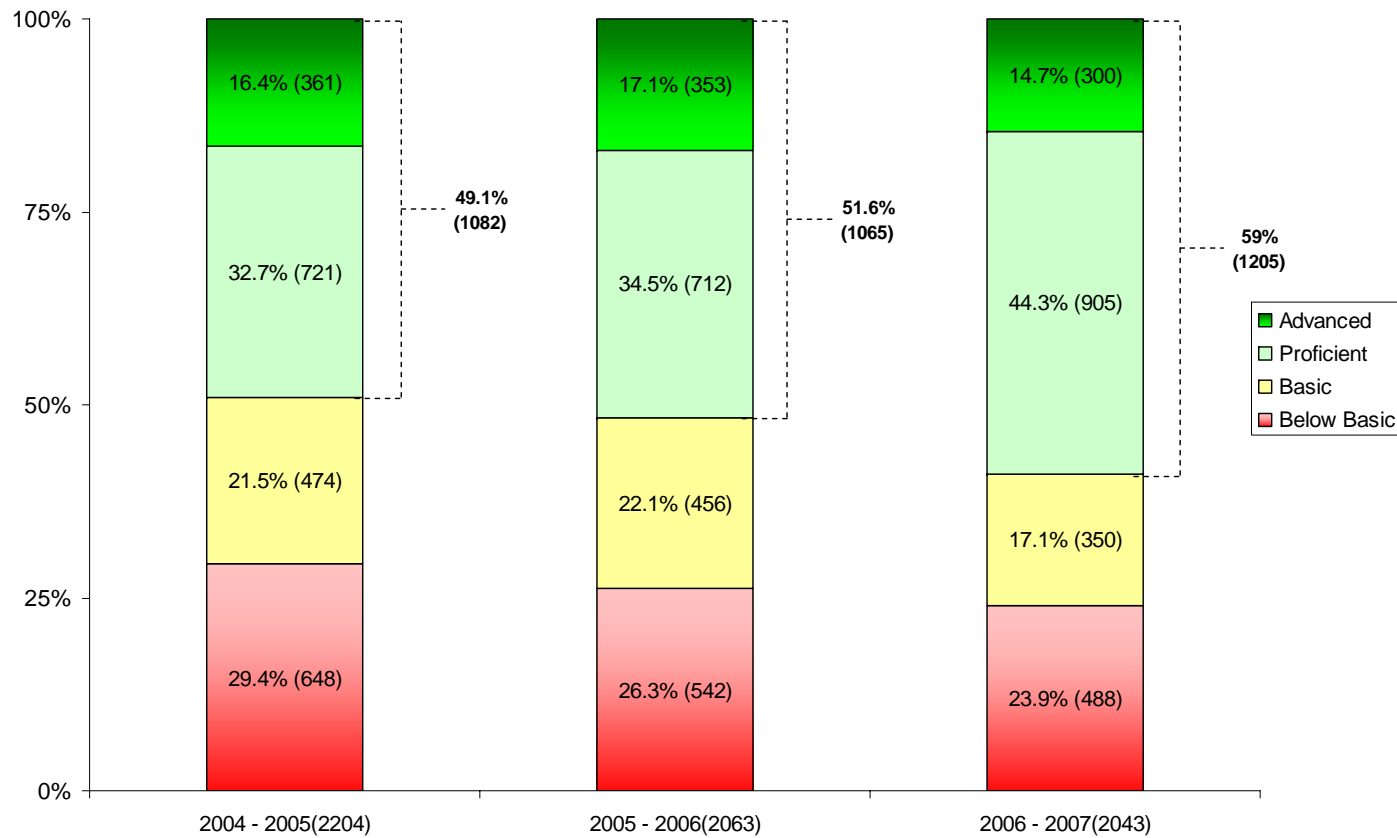


Note: Numbers in parentheses represent the number of students.

August 16, 2007



District Trend in PSSA Performance Grade 3 Reading



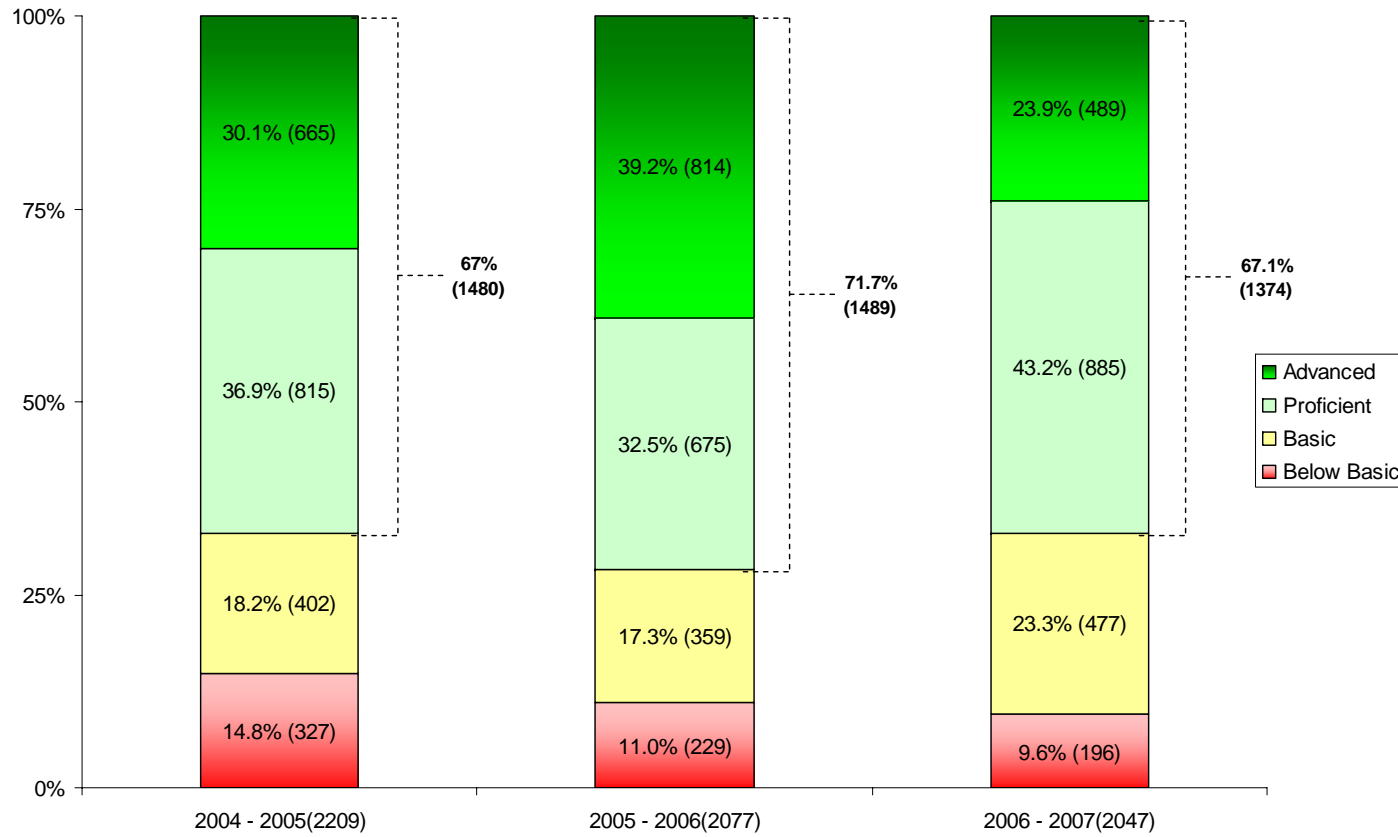
Note: Numbers in parentheses represent the number of students.

August 16, 2007



EXCELLENCE
FOR ALL

District Trend in PSSA Performance Grade 3 Math



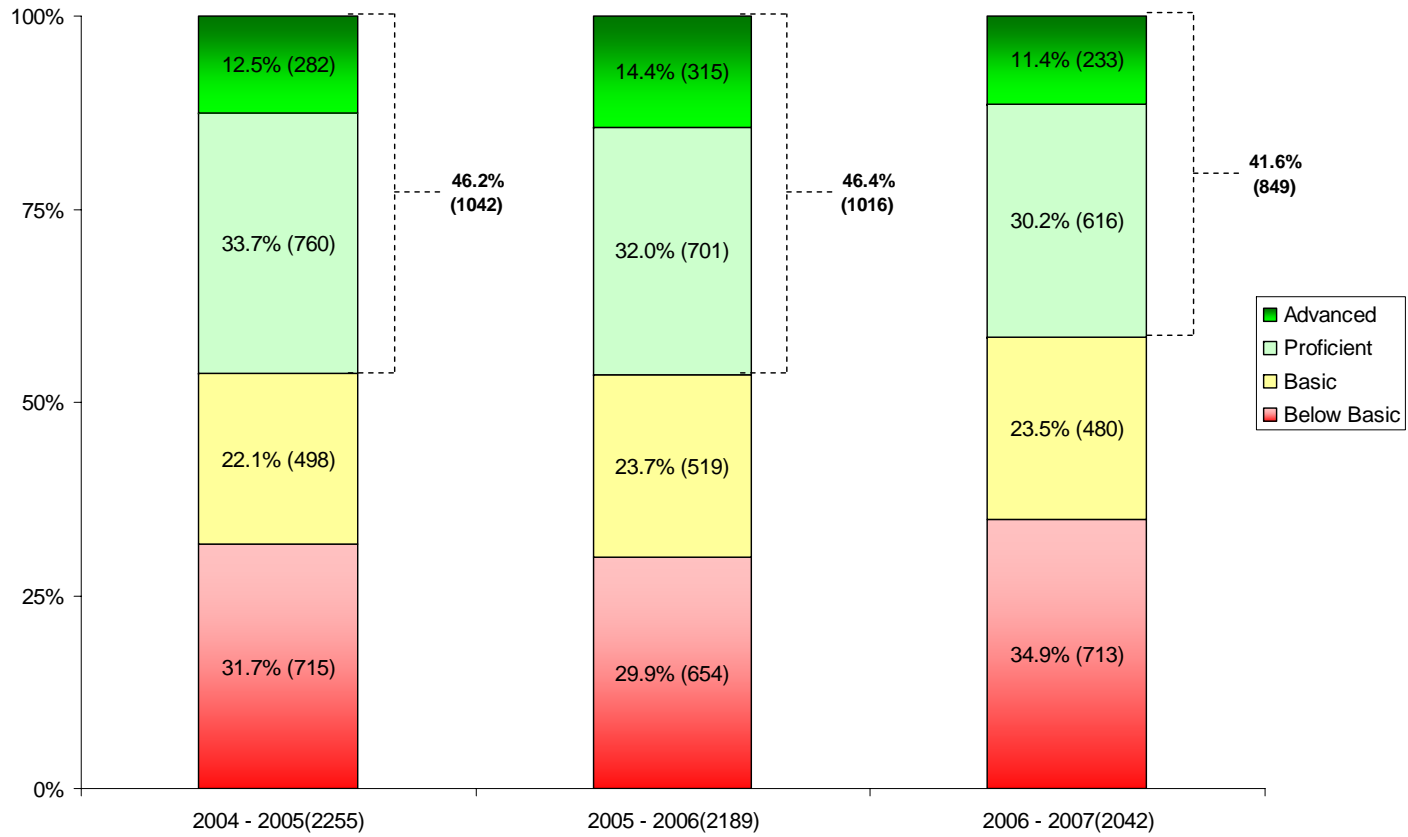
Note: Numbers in parentheses represent the number of students.

August 16, 2007



EXCELLENCE
FOR ALL

District Trend in PSSA Performance Grade 5 Reading



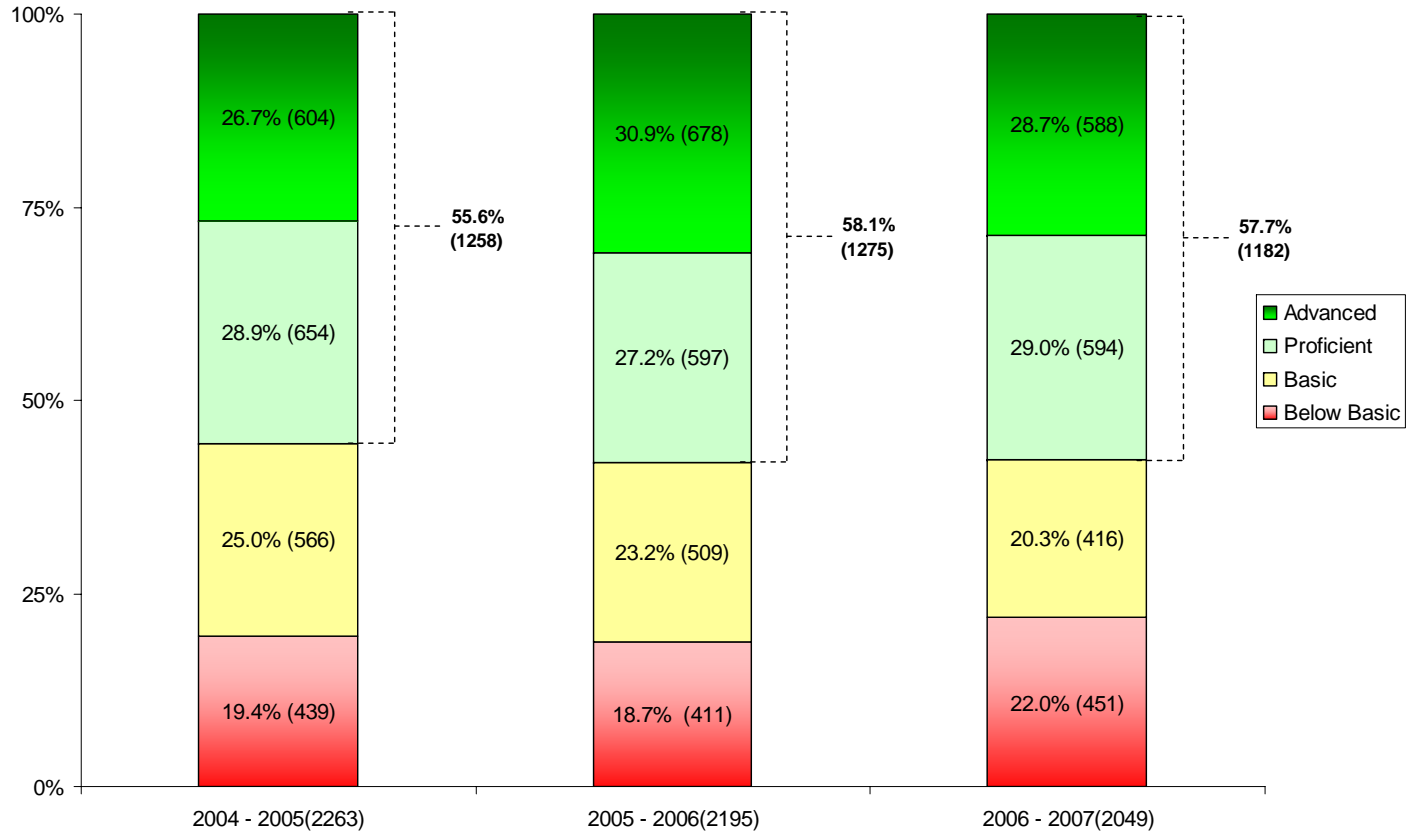
Note: Numbers in parentheses represent the number of students.

August 16, 2007



EXCELLENCE
FOR ALL

District Trend in PSSA Performance Grade 5 Math

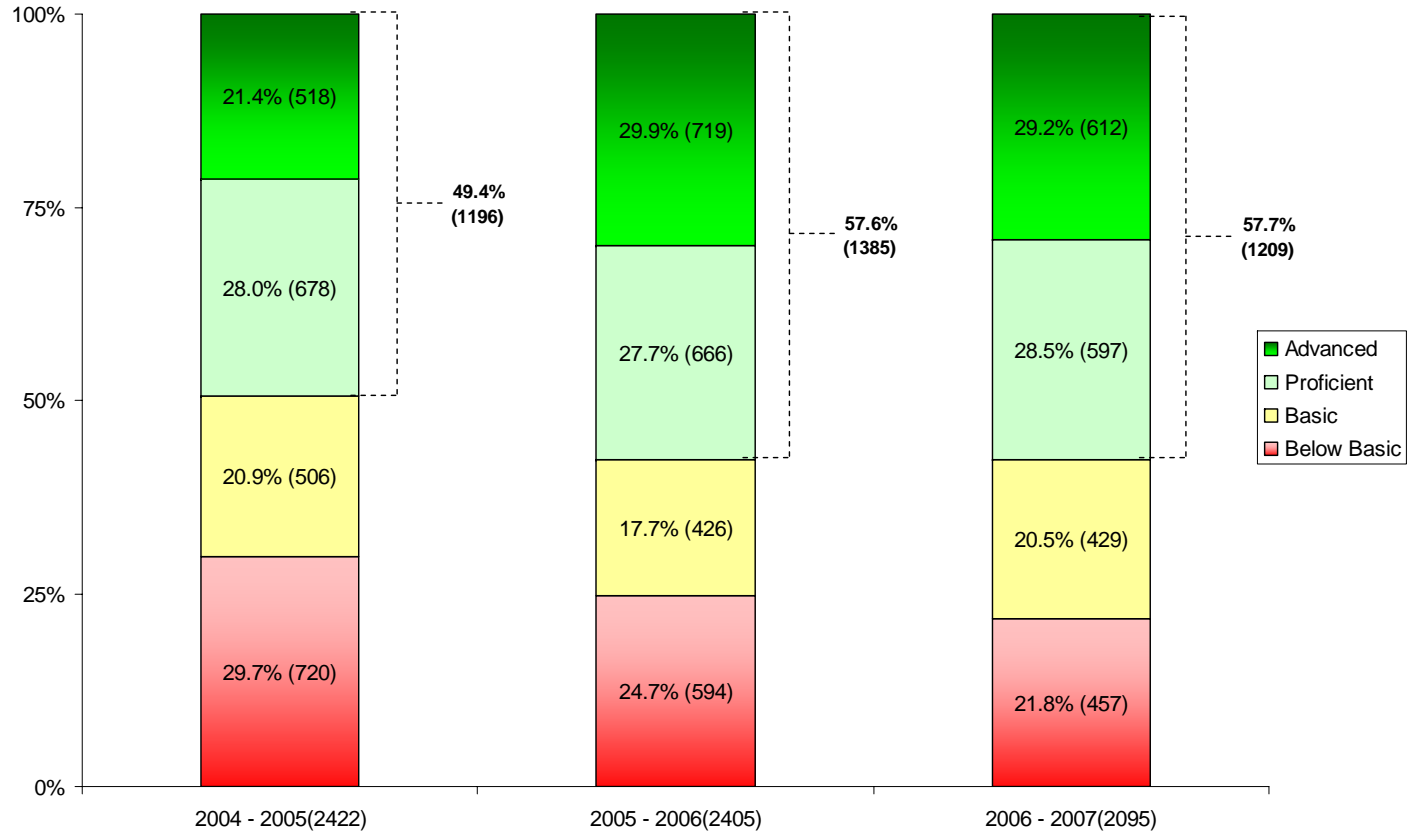


Note: Numbers in parentheses represent the number of students.

August 16, 2007



District Trend in PSSA Performance Grade 8 Reading



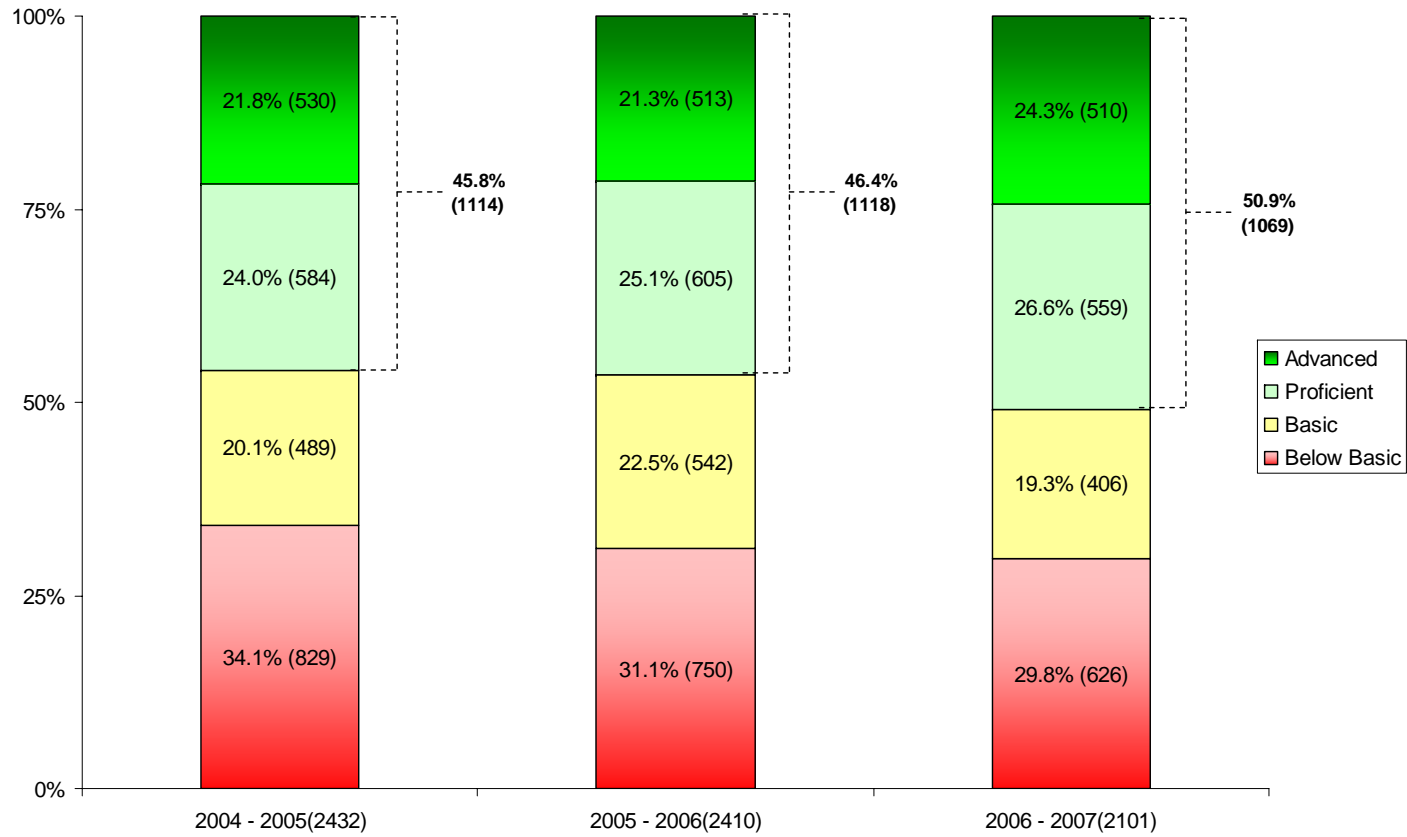
Note: Numbers in parentheses represent the number of students.

August 16, 2007



EXCELLENCE
FOR ALL

District Trend in PSSA Performance Grade 8 Math



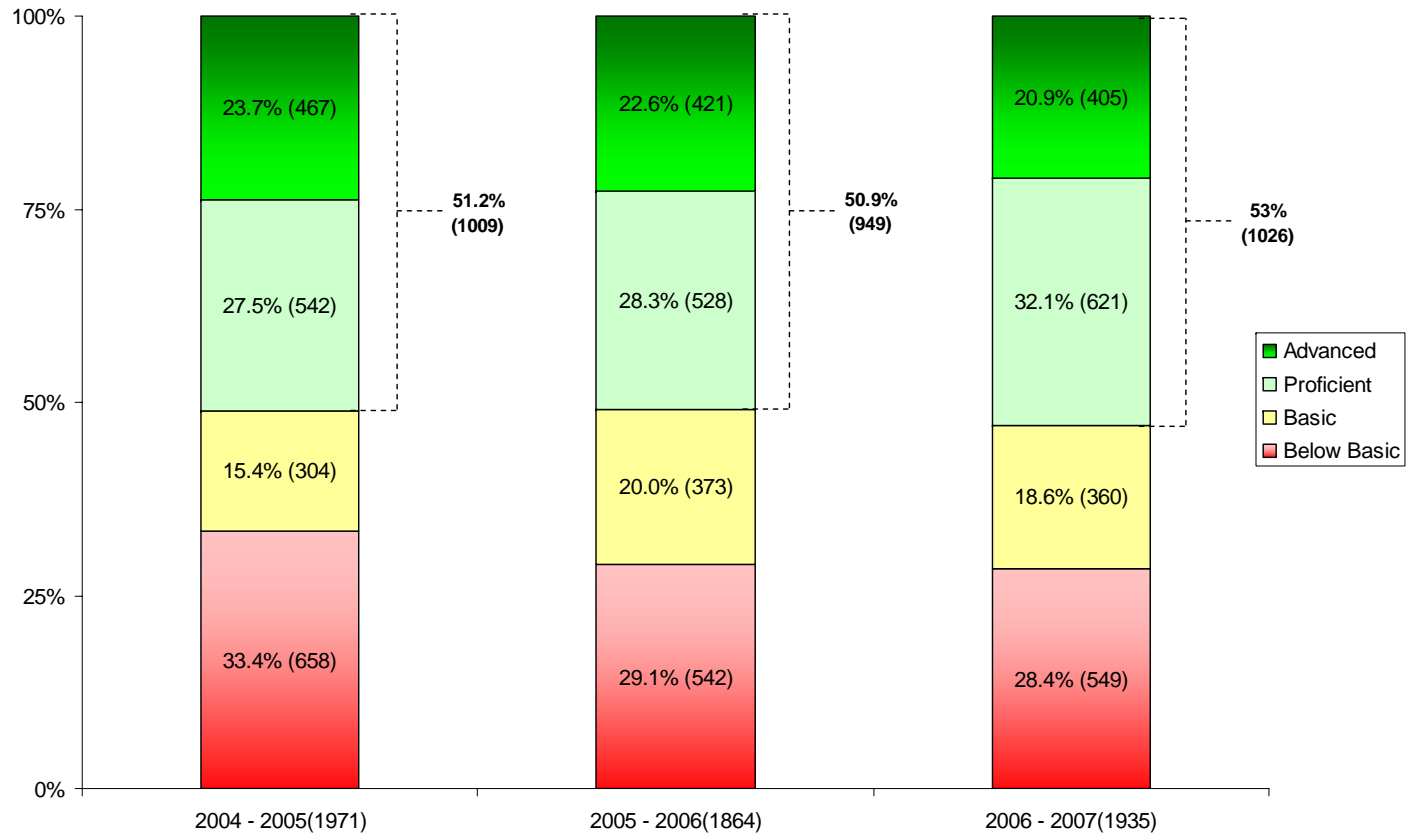
Note: Numbers in parentheses represent the number of students.

August 16, 2007



EXCELLENCE
FOR ALL

District Trend in PSSA Performance Grade 11 Reading



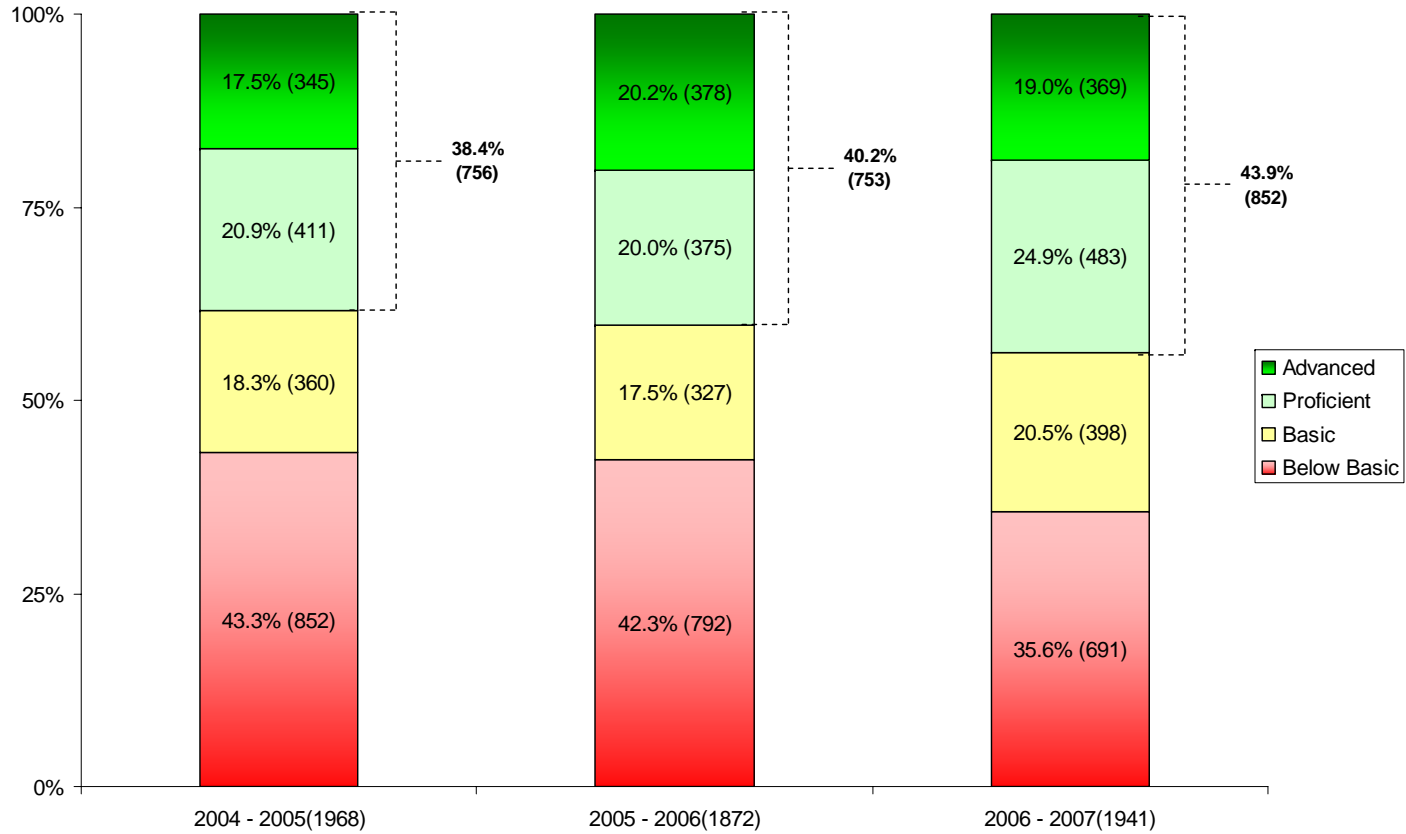
Note: Numbers in parentheses represent the number of students.

August 16, 2007



EXCELLENCE
FOR ALL

District Trend in PSSA Performance Grade 11 Math

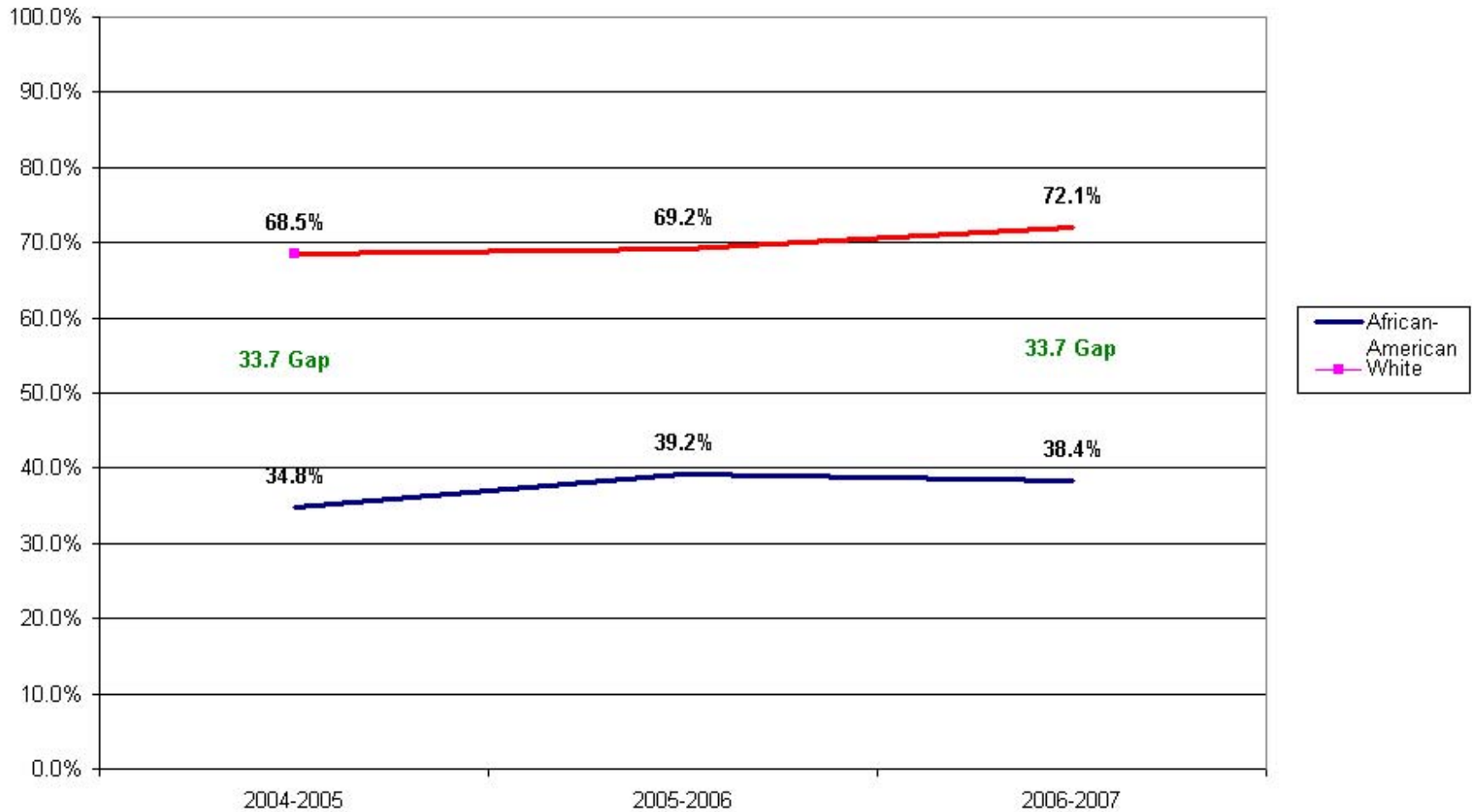


Note: Numbers in parentheses represent the number of students.

August 16, 2007



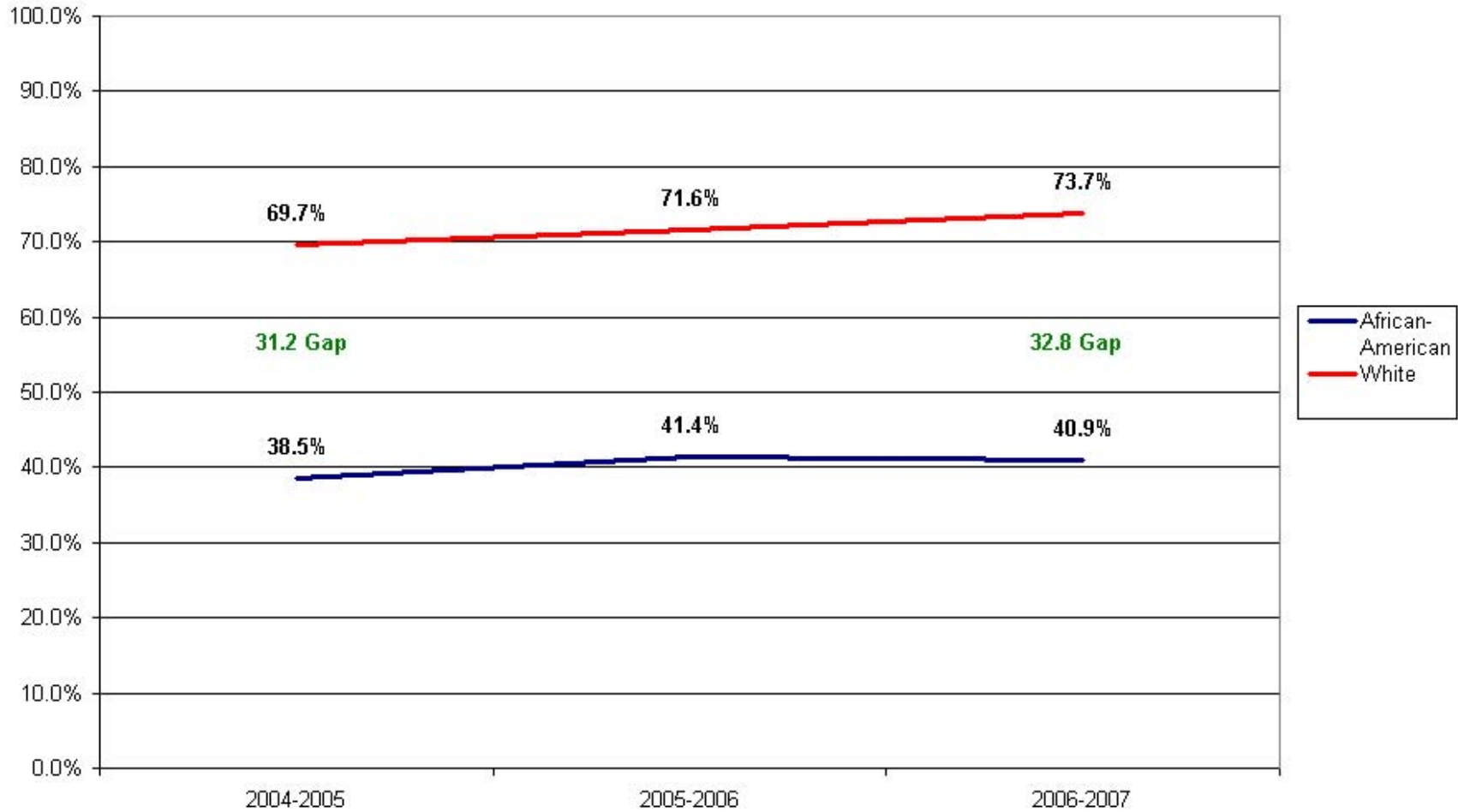
Academic Disparity PSSA Performance % Proficient + Advanced Combined Grades 3,5,8,11 Reading



August 16, 2007

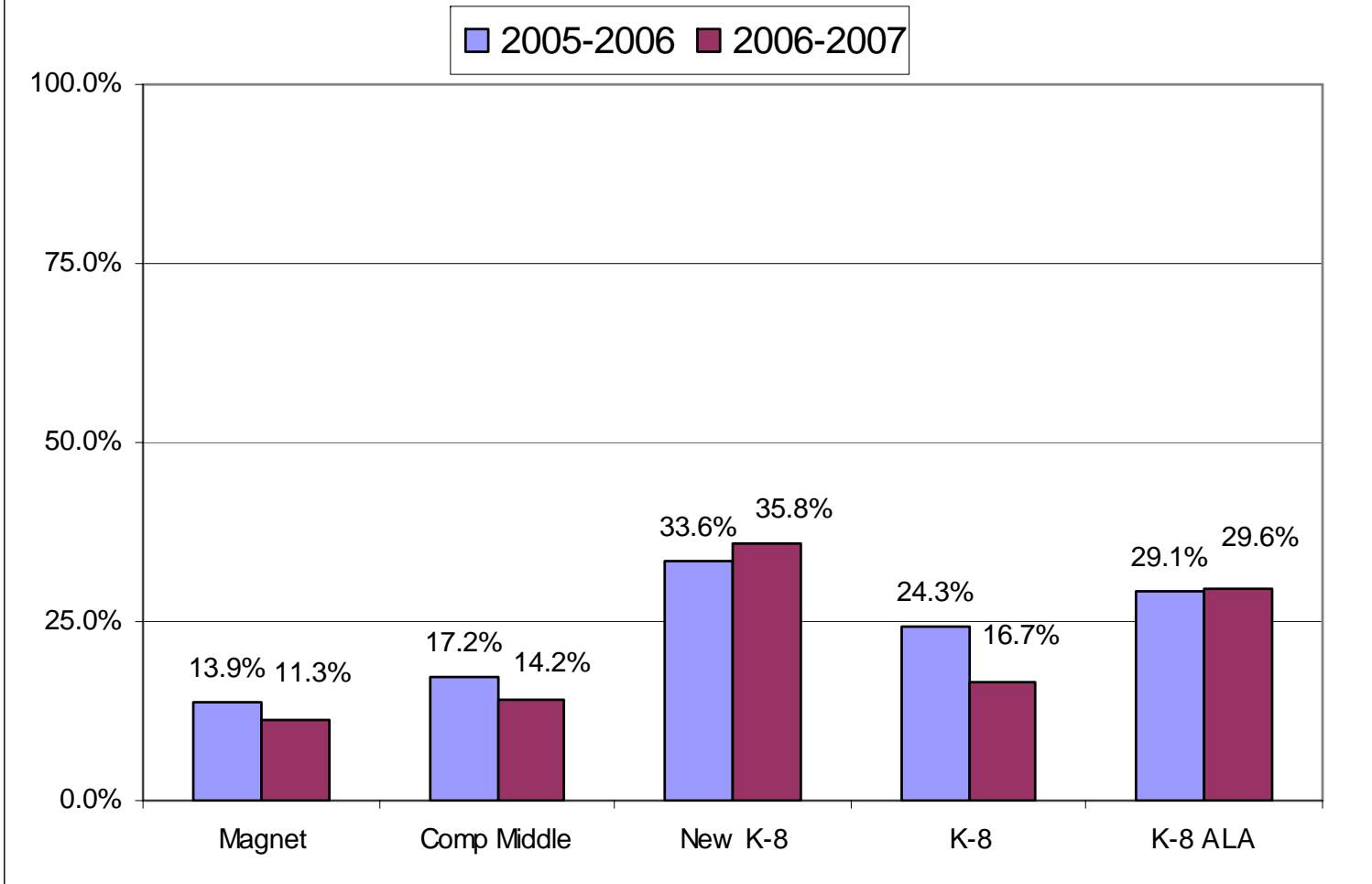


Academic Disparity
PSSA Performance % Proficient + Advanced
Combined Grades 3,5,8,11 Math

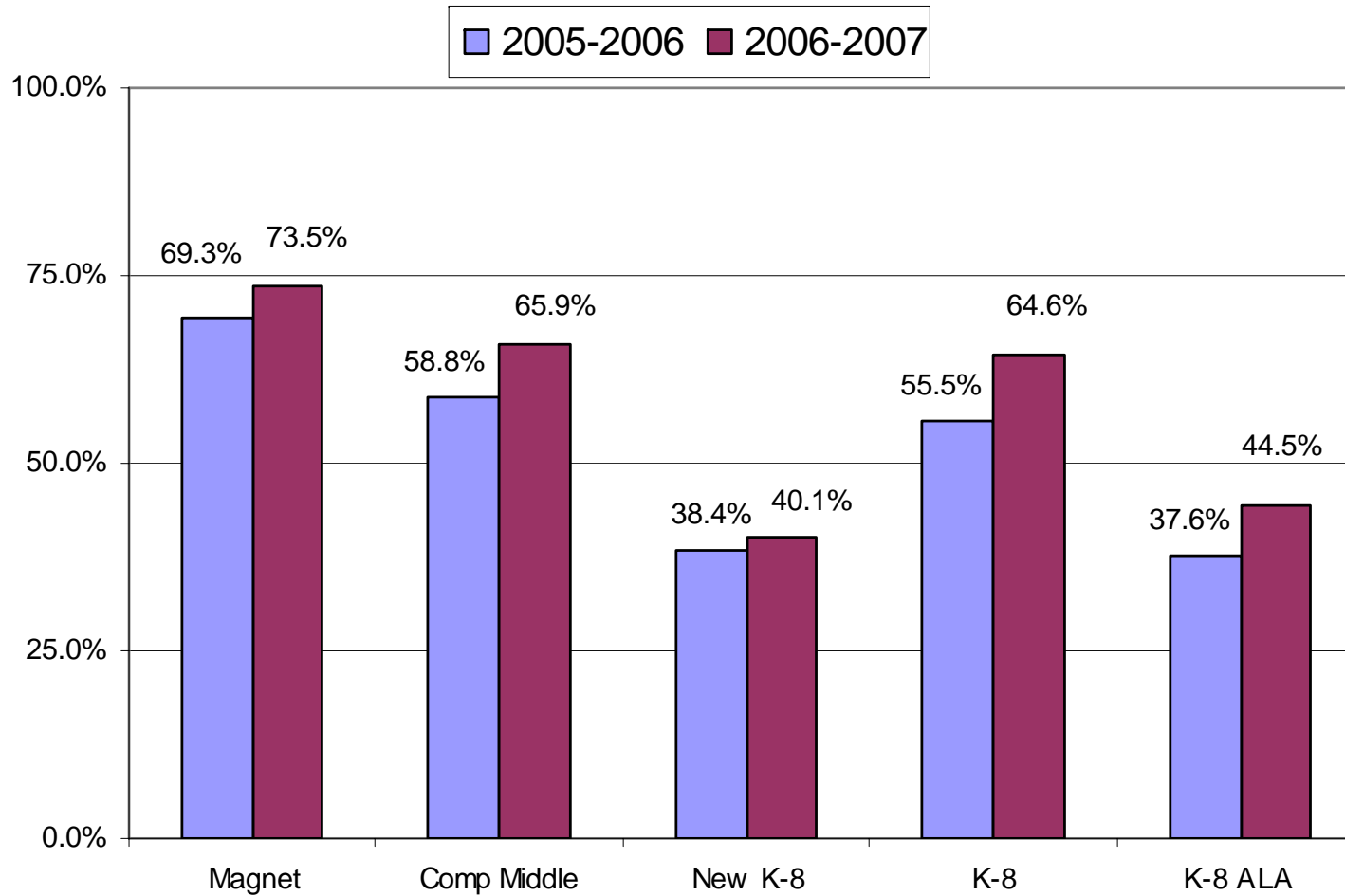


August 16, 2007

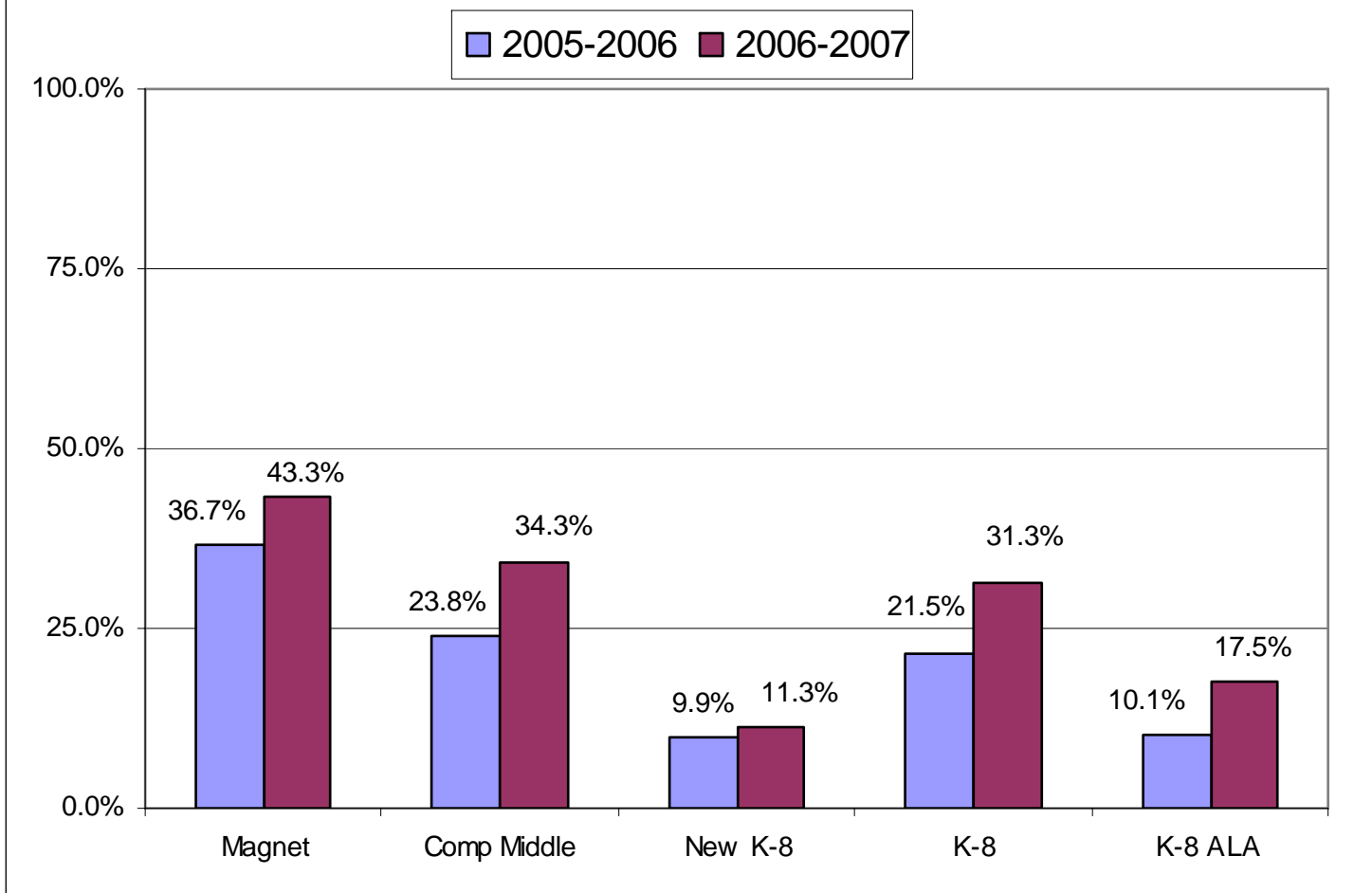
**2-Year Longitudinal Performance by School Type
Grade 7 to 8 Reading
% Below Basic**



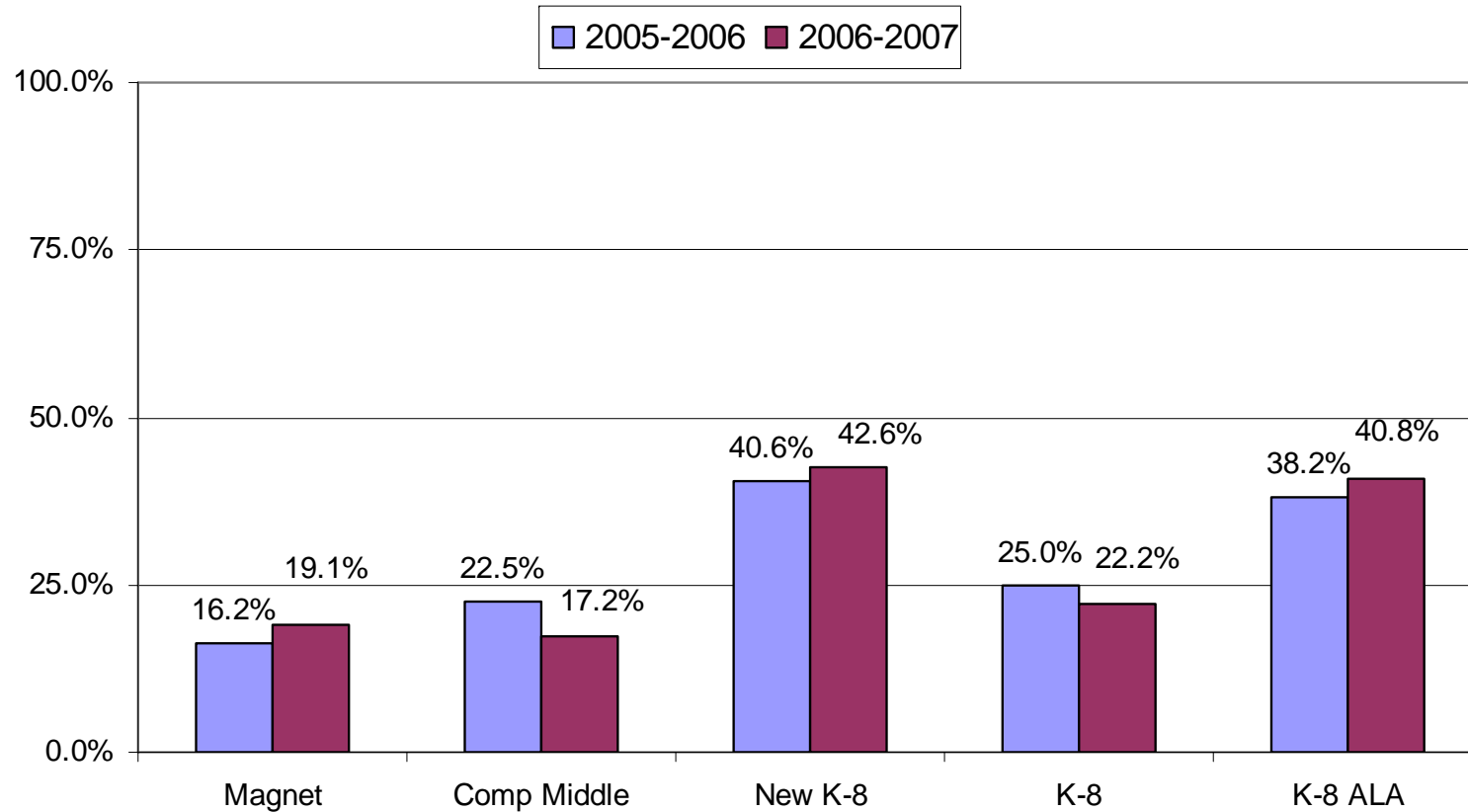
**2-Year Longitudinal Performance by School Type
Grade 7 to 8 Reading
% Proficient or Advanced**



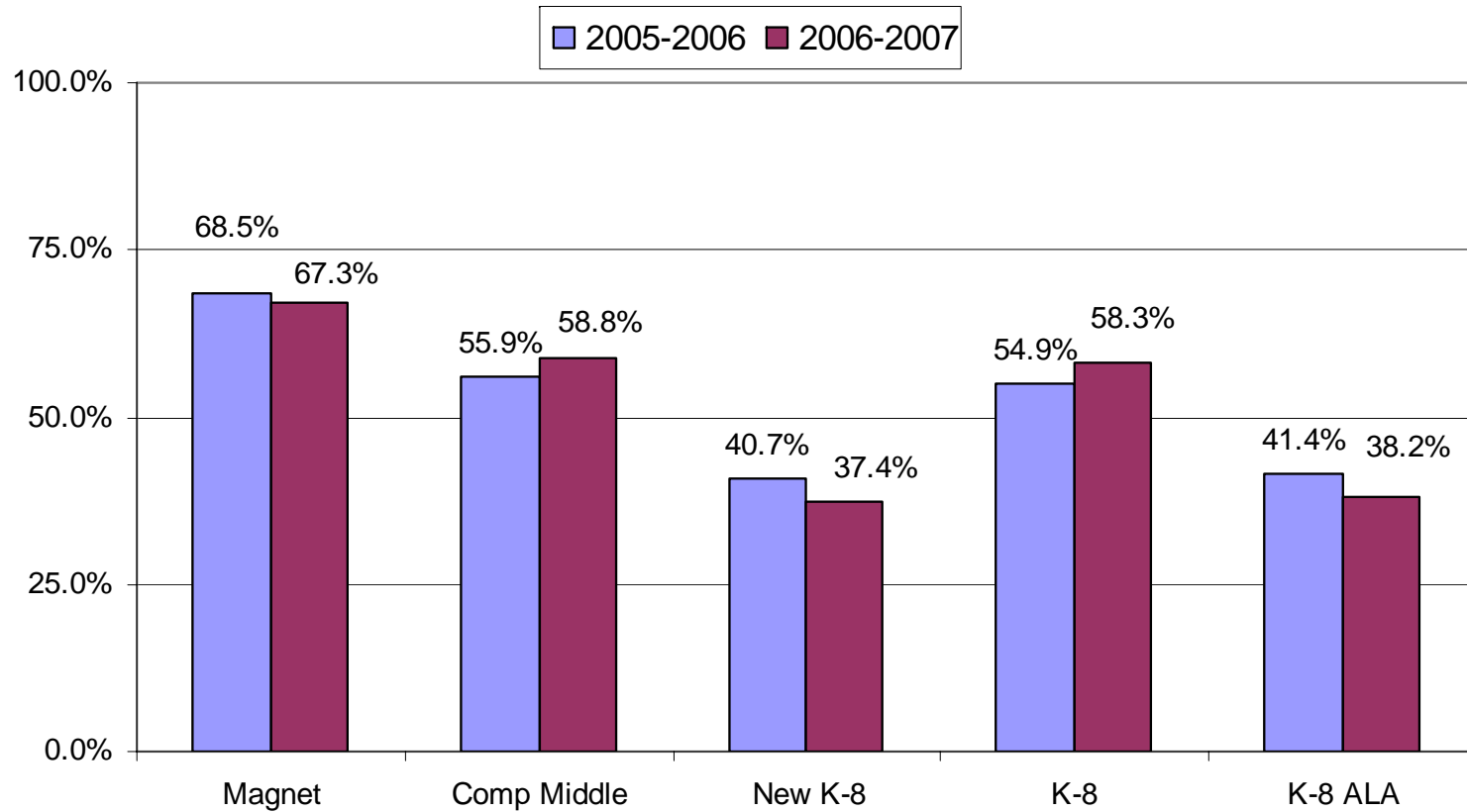
2-Year Longitudinal Performance by School Type Grade 7 to 8 Reading % Advanced



2-Year Longitudinal Performance by School Type Grade 7 to 8 Mathematics % Below Basic



**2-Year Longitudinal Performance by School Type
Grade 7 to 8 Mathematics
% Proficient or Advanced**



2-Year Longitudinal Performance by School Type Grade 7 to 8 Mathematics % Advanced

