



Pittsburgh Alderdice

Jan. 19, 2023
PSCC

Mental Health
Matters:
Student
Supports
offered at
Alderdice



STUDENT SERVICES



Social Workers



Debbie Genter MSW, LSW A-K



Leanne Wilson MSW, LSW L-Z

Student Services



Counselors

Dana Hecht

A-E



Tica Harris

F-K

Student Services



Counselors



Amy Hand

L-R



Lyndsey Van Luik

S-Z

STUDENT SERVICES



Transition Counselors



Courtney Stonestreet

PSE (10th and 11th)



Maggie Ionadi

PSE (9^h and 12th)

STUDENT SERVICES



**STUDENT SERVICE ASSISTANT
TAMMY GARNETT**



**TEEN PARENT ADVOCATE
JUDY ROGALSKY**

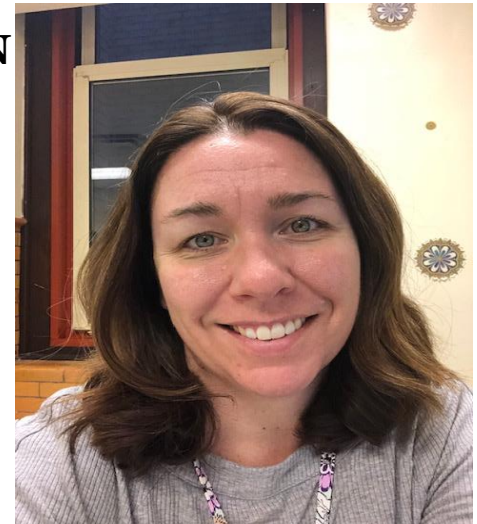


Alderdice Nursing



LAUREN COMPEL, RN,CSN, BSN

KRISTIE YALCH, RN, CSN, MSN



Project Assistant Restorative Room



RUSHAN ROBERTS



What is Safe2Say Something?

Safe2Say Something is a youth violence prevention program run by the Pennsylvania Office of Attorney General. The program teaches youth and adults how to recognize warning signs and signals, especially within social media, from individuals who may be a threat to themselves or others and to “say something” BEFORE it is too late. With Safe2Say Something, it’s easy and confidential to report safety concerns to help prevent violence and tragedies.



Here’s how it works:

Submit an anonymous tip report through the Safe2SaySomething system

Crisis center reviews, assesses and processes all submissions

Crisis center sends all submissions to school administration and/or law enforcement for intervention

If needed, crisis center may contact tipster anonymously through the app

GET THE FACTS:

1,000,000 students reported being harassed, threatened or subject to other forms of cyberbullying

80% of school shooters told someone of their violent plans. 59% told more than one person.

70% of people who complete suicide told someone of their plans and gave some other warning sign.

<https://www.safe2saypa.org/>

ATTENDANCE



- BE PRESENT, PARTICIPATE
- TURN IN EXCUSES AND COMPLETE MAKE UP WORK
- EXCUSES SHOULD BE EMAILED TO ALLDERDICEHS@PGHSCHOOLS.ORG
- STUDENTS ARE ONLY PERMITTED TO HAVE 10 PARENT EXCUSES FOR THE SCHOOL YEAR
- STUDENTS ARE ONLY PERMITTED TO HAVE A COMBINATION OF 10 EARLY DISMISSALS AND TARDY MARKS

ALLDERDICE Student Assistance Program (SAP) TEAM



As part of the SAP process students are linked to various individuals within the school to assist in addressing barriers and behaviors that impact their ability to learn. Members of the SAP team include:

**ADMINISTRATION
TEACHERS
STUDENT SERVICES
COMMUNITY PROVIDERS**

Community Provider Behavioral Health Liaison

12

DR. PAULA MCCOMMONS

UPMC-WBH

BEHAVIORAL HEALTH LIAISON

HEALTH SERVICES SUITE

INDIVIDUAL SCREENINGS



Community Provider Drug and Alcohol Prevention and Education

MRS. DEBBIE STEWART

**TURTLE CREEK VALLEY
COMMUNITY SERVICES**

**HEALTH CLASSES, INDIVIDUAL,
GROUPS**



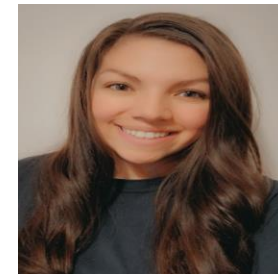
Community Provider Glade Run School Based Mental Health



LATISHA LEWIS-FAVERS, MA



NICOLE NIGBOROWICZ



AISHA PIER, LSW



Student Support Mentor



Rick Buttler- REACH



Outside Mental Health Support



eLuma

Eluma Therapy- Online mental health services for students in grades K-12. FREE through partnership with PPS.

<https://eluma.com/>

Up Street- FREE mental health support for anyone ages 12-22. Looking to partner with Alderdice for some student social emotional groups

<https://upstreetpgh.org/>

